

MAKE A POSITIVE DIFFERENCE AT OUR PIONEERING NEW HEALTHCARE FACILITIES



WE ARE RECRUITING NOW
TEAM DERBYSHIRE HEALTHCARE



Join Team Derbyshire Healthcare
makingroomfordignityjobs.org.uk



Team Derbyshire Healthcare

We are a provider of NHS mental health, learning disabilities and substance misuse (drug and alcohol) services in Derby city and Derbyshire county. We also provide a wide range of children's services. We employ more than 3,000 staff providing inpatient and community services across the whole of Derbyshire. Across the county and the city, we serve a combined population of approximately one million people.

There are few careers that are as rewarding as one at Derbyshire Healthcare. Here you will have the opportunity to support people of all backgrounds and ages.

By joining Team Derbyshire Healthcare, you will become part of a talented, compassionate and enthusiastic group of people who work towards a set of values, committed to making a positive difference in people's lives.

"The staff have helped me a lot through my good and bad moments and I've learned to do things for myself, accept help and responsibility and become as independent as possible..."
- A Derbyshire Healthcare patient



All staff photos are from the Trust's Hartington Unit and Radbourne Unit

OUR VALUES:

- People first** – We work compassionately and supportively with each other and those who use our services. We recognise a well-supported, engaged and empowered workforce is vital to good patient care
- Respect** – We respect and value the diversity of our patients, colleagues and partners and want them to feel they belong within our respectful and inclusive environment
- Honesty** – We are open and transparent in all we do
- Do your best** – We recognise how hard colleagues work and together we want to work smarter, striving to support continuous improvement in all aspects of our work.

Exciting new developments

Thank you for showing an interest in working for Derbyshire Healthcare NHS Foundation Trust and our Making Room for Dignity programme.



Our Trust vision is to make a positive difference to the lives of our patients, service users, carers and colleagues. That positive difference is due to the committed, professional and enthusiastic people we recruit to be part of our team. We offer a friendly, welcoming and inclusive working environment which embraces shared decision-making with colleagues, ensuring our values are at the heart of everything we do.

"These pioneering new healthcare facilities will be a real asset in providing dignity and care for the people of Derbyshire and the new Psychiatric Intensive Care facilities will really support those who currently need to travel for care."

We are a forward-thinking, diverse organisation that prides itself on its 'people first' approach to care, and actively embraces diversity.

I have been a part of the Trust since 2021, and it was the Trust's vision and values which made it such an attractive place to work. I hope you find our new healthcare facility builds as inspiring as I do. I look forward to seeing you soon.

Selina
Selina Ullah - Trust Chair



In 2020 the Government pledged more than £400 million to eradicate dormitory accommodation from mental health facilities across the country to improve safety, privacy and dignity for patients. National and local investment of more than £150m has been allocated for the development of six new and refurbished facilities across Derbyshire, including:

- The Derwent Unit**
A **NEW** 54-bed mental health acute inpatient unit on the Chesterfield Royal Hospital site
- Bluebell Ward**
Fully refurbished older adult inpatient ward, relocating from the Hartington Unit to Walton Hospital, Chesterfield
- Carsington Unit**
A **NEW** 54-bed mental health acute inpatient unit on the Kingsway Hospital site, Derby
- Kingfisher Unit**
A **NEW** 14-bed Psychiatric Intensive Care Unit on the Kingsway Hospital site, Derby
- Audrey House**
A **NEW** Enhanced Care Unit for women in a fully refurbished eight-bed unit on the Kingsway Hospital site, Derby
- Radbourne Unit Full refurbishment of two 17-bed mental health acute wards on the Royal Derby Hospital site**



JOIN TEAM DERBYSHIRE HEALTHCARE

Join the talented, compassionate and enthusiastic group of colleagues who are committed to making a positive difference in people's lives.



TRUST OF THE YEAR
ASIAN PROFESSIONALS NATIONAL ALLIANCE (APNA) NHS AWARDS 2023

TRUST OF THE YEAR FINALIST
THE HEALTH SERVICE JOURNAL (HSJ) AWARDS 2022

STAFF BENEFITS:

- Flexible working opportunities
- NHS pension scheme
- Structured learning and career development opportunities
- Health and wellbeing services
- NHS discounts
- Range of supportive staff networks
- Family leave
- Generous annual leave scheme
- Salary sacrifice schemes
- Long-service awards

Interested in working for us? Visit...
makingroomfordignityjobs.org.uk



If you would like this information in a different language or format, including Easy Read or BSL, contact dhcft.communications@nhs.net

Ak by ste chceli tieto informácie v inom jazyku alebo vo formáte, kontaktujte spoločnosť dhcft.communications@nhs.net

Pokud budete chtít tyto informace v jiném jazyce nebo ve formátu, kontaktujte dhcft.communications@nhs.net

如果您希望以另一种语言或另一种格式接收此信息, 请联系 dhcft.communications@nhs.net

Si vous souhaitez recevoir ces informations en une autre langue ou un autre format, veuillez contacter dhcft.communications@nhs.net

ਜੇ ਤੁਸੀਂ ਇਸ ਜਾਣਕਾਰੀ ਨੂੰ ਹੋਰ ਭਾਸ਼ਾ ਜਾਂ ਫਾਰਮੈਟ ਵਿੱਚ ਚਾਹੁੰਦੇ ਹੋ ਤਾਂ ਕਰਿਪਾ ਕਰਕੇ ਸੰਪਰਕ ਕਰੋ dhcft.communications@nhs.net

Jeżeli chcieliby Państwo otrzymać kopię niniejszych informacji w innej wersji językowej lub w alternatywnym formacie, prosimy o kontakt z dhcft.communications@nhs.net

Heke hūn dixwazin ev agahdariyê di zimanek cuda an formatê bixwazin kerema xwe ji re têkilî bikin dhcft.communications@nhs.net

ان ہڈی رس وڈی سکتام دل ع م ہی پ آرگ ان رک ل صلح نی م ش ی م راف رو ای س ک ای نی رگ ط ب ارم رگ ه ا ب و ت نی ه س س ت ا ج dhcft.communications@nhs.net



EXCITING NEW DEVELOPMENTS IN
Chesterfield



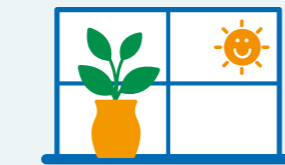
01 NEW Derwent Unit
Mental health acute inpatient unit

54-bed single-room, en-suite accommodation to support adults of working age. The Derwent Unit is being built on the Chesterfield Royal Hospital site to replace the Hartington Unit.



02 Bluebell Ward
Refurbished ward for older adults

Relocating from the Hartington Unit to Walton Hospital, the 12-bed Bluebell Ward will be refurbished to the same high standards as our new buildings and provide focused mental healthcare for older adults.

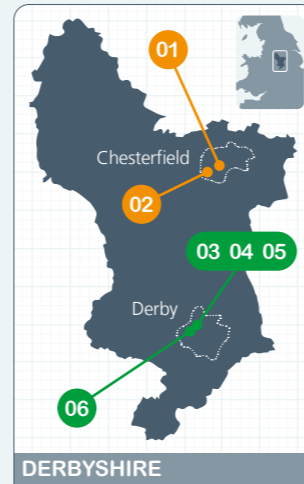


Making Room for Dignity

Our Making Room for Dignity programme includes six projects, including two new 54-bed inpatient units and a new Psychiatric Intensive Care Unit. All six projects will include single en-suite rooms, which will greatly improve the privacy and dignity of those receiving care for their mental health in Derbyshire. Each new building will be purpose built and have a real focus on co-design with service users, carers, and members of our staff. All the refurbishment projects will be to the same high standard and in line with national requirements.

A POSITIVE DIFFERENCE:

- Improved patient experience leading to better outcomes and the reduced risk of readmission.
- Patients' personal preferences can be accommodated, for example, the temperature of each room can be adjusted to suit individual needs.
- Single rooms will also ensure better infection control and reduce the risk of incidents involving patients or staff.
- The new builds will be equipped with modern facilities and additional resources, including a therapy suite incorporating Activities of Daily Living (ADL) kitchen, indoor fitness room, arts room, and access to secure outdoor spaces.



“ I was in a dark place when I came onto Morton Ward in 2018 and four years later, I no longer have my mental health diagnosis... I cannot begin to tell you how much you all impacted my life for the better.”

- A patient from the Hartington Unit



EXCITING NEW DEVELOPMENTS IN
Derby



03 NEW Carsington Unit
Mental health acute inpatient unit

This 54-bed inpatient unit will provide single-room, en-suite accommodation for adult patients. We will be relocating these services from the Radbourne Unit within the Royal Derby Hospital site to the beautiful surroundings of Kingsway Hospital in Derby.

The new Carsington Unit will offer great training and development opportunities for new and existing staff as well as improved safety, privacy and dignity for patients.

EXCITING TIMES...

This is a really exciting time to be part of Team Derbyshire Healthcare and a once-in-a-lifetime opportunity to invest in facilities that will hugely benefit Derbyshire. **Find out how you can be involved at:**

MAKINGROOMFORDIGNITYJOBS.ORG.UK



04 NEW Kingfisher House
Psychiatric Intensive Care Unit

There is currently no Psychiatric Intensive Care Unit (PICU) in Derbyshire and people who need this level of support currently need to travel outside the county.

With an average of 14 men being supported outside of Derbyshire at any one time, we are building a new 14-bed male PICU on the Kingsway Hospital site in Derby. This will also provide easy access to a wide range of other specialist mental health facilities including a low secure unit and rehabilitation services.

Kingfisher House will be focused on therapeutic interventions and will deliver care to the national standard of PICU recommendations.

As a completely new facility and service there are greater opportunities for staff and patient input into the development and service.



“ Throughout my stay on the ward all the nurses and nursing assistants were supportive and very caring ... staff always kept the ward a cheerful and safe place...”

- A patient from the Radbourne Unit



05 NEW Audrey House
Female Enhanced Care Unit

Given the smaller number of women who require a specialist PICU bed, this new eight-bed Enhanced Care Unit at Kingsway will bridge the gap between acute care and PICU care by providing an increased level of support for women.



06 Radbourne Unit refurbishment

We will be refurbishing the Radbourne Unit, within the Royal Derby Hospital site, to deliver the same national standard of single-room, en-suite accommodation across two ground-floor wards for 34 patients with access to outdoor space for our service users.

